

REVISION HISTORY				
REV.	DATE	MODIFICATIONS	NAME	ECN NO.
A	23 JUN 2020	NEW - spins-off from 4010050856.	Seka X.	20072432
B	8 SEP 2020	Updated ECN number and graphics.	Seka X.	20073621

DO NOT PRINT THIS PAGE

Printing Notes:

Material: White washable and tear resistant non-woven fabric, such as Tyvek.

Ink: Per Adobe file



Resolution: 150 DPI or above

Printing method: 2-side (front & back), Offset Printing

Size: 8.27 x 11.69 in (W x H) (A4)

Program: InDesign CS6
Black
C:0 M:100 Y:100 K:0
C:100 M:0 Y:100 K:0

RELEASED FOR PRODUCTION

<p>CONFIDENTIAL</p> <p>THIS DOCUMENT AND ITS CONTENTS ARE CONFIDENTIAL AND CONSTITUTE TRADE SECRETS PROPRIETARY TO NEWELL BRANDS, WHO RESERVE ALL RIGHTS THEREIN. BY ACCEPTING THIS DOCUMENT, THE RECIPIENT AGREES NOT TO COPY, USE, MANUFACTURE, OR COMMUNICATE TO OTHERS, WHOLLY OR IN PART, THE CONTENTS OF THIS DOCUMENT EXCEPT AS EXPRESSLY AUTHORIZED IN WRITING BY NEWELL BRANDS.</p>		 <p>3 Glenlake Parkway Atlanta, GA 30328 USA</p>	
MATERIAL: SEE NOTES		FINISH: SEE NOTES	
DRAWING PREPARED IN ACCORDANCE WITH ASME Y14.5			
TITLE: IFU Tunnel Cap Tents			
1ST ANGLE PROJECTION 	DRAWN BY: Seka X.	SCALE: 1 : 1	DRW NO.
DATE: 23 JUN 2020	SHEET 1 OF 1	4010068357	REV B

0 - CHECK LIST

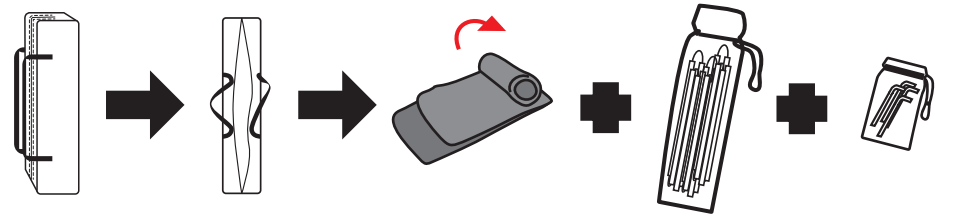



Diagram illustrating the components of the tent: the tent body, poles, and stakes.

1 - SET UP

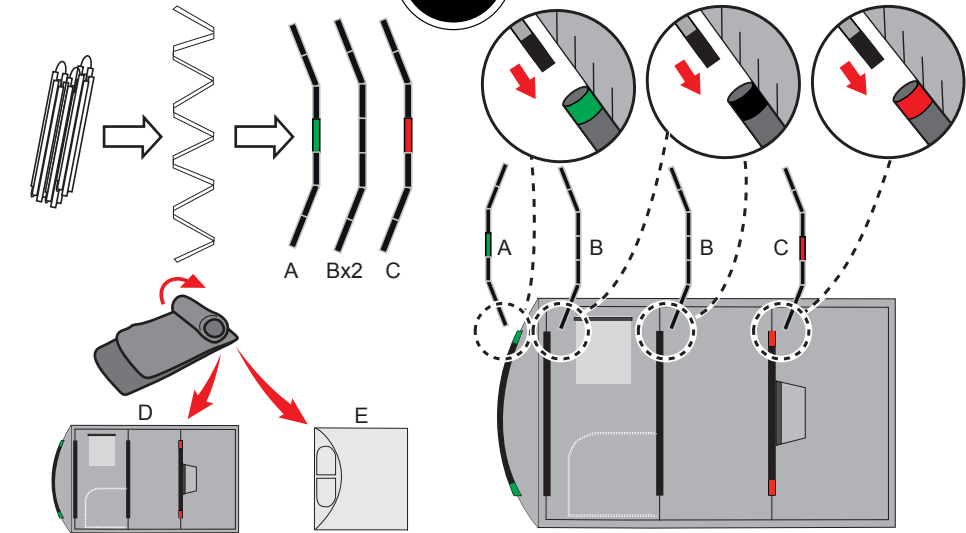



Diagram illustrating the assembly of the poles (A, Bx2, C) and their attachment to the tent body (D, E).

2 - SET UP

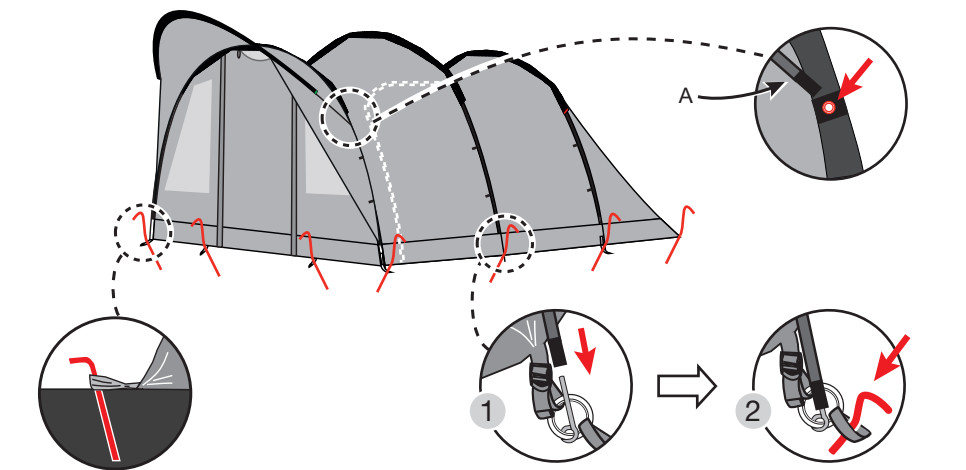


Diagram illustrating the tent being pitched and secured with stakes (1, 2).

3 - SET UP

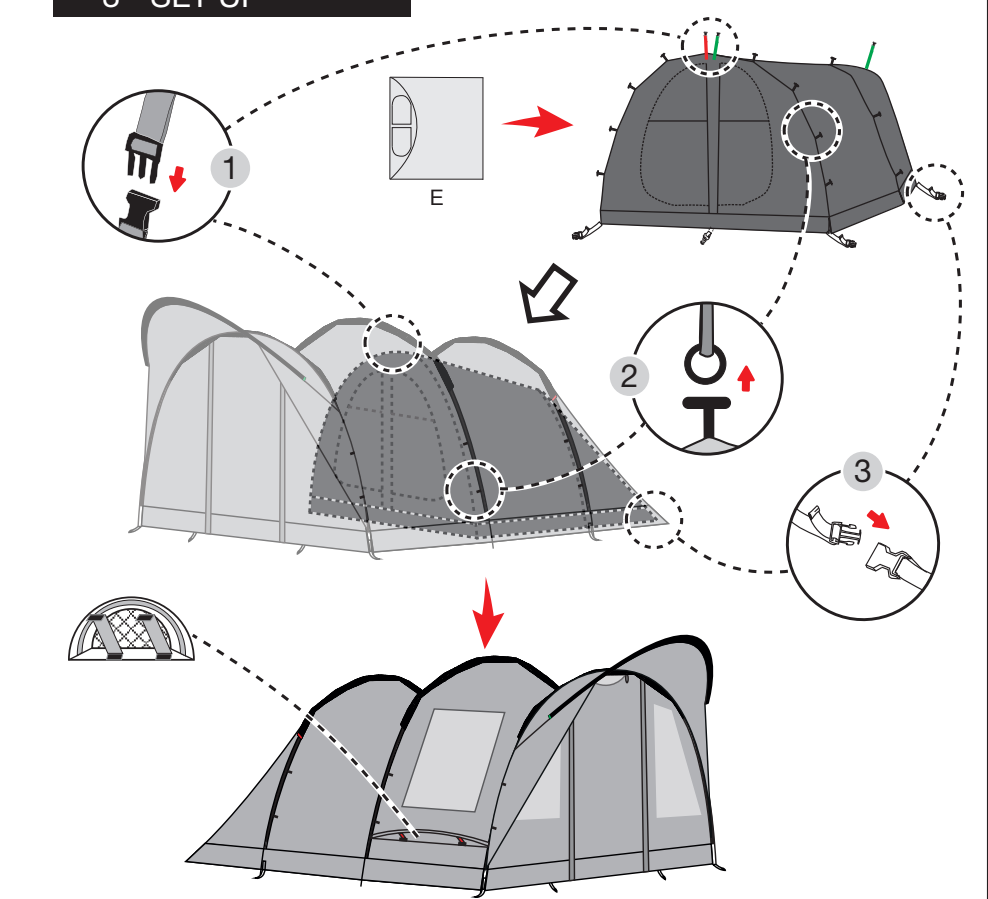


Diagram illustrating the final steps of setting up the tent, including securing the flysheet and attaching the stakes (1, 2, 3).

4 - SET UP

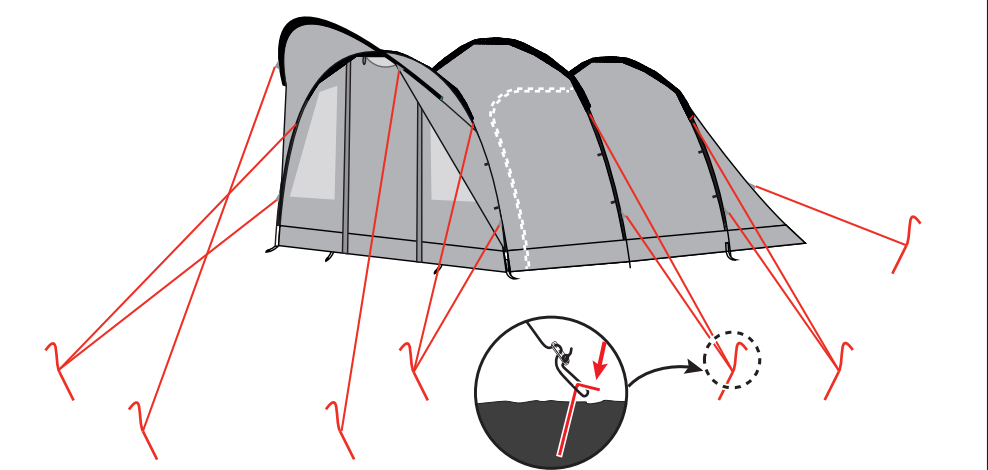
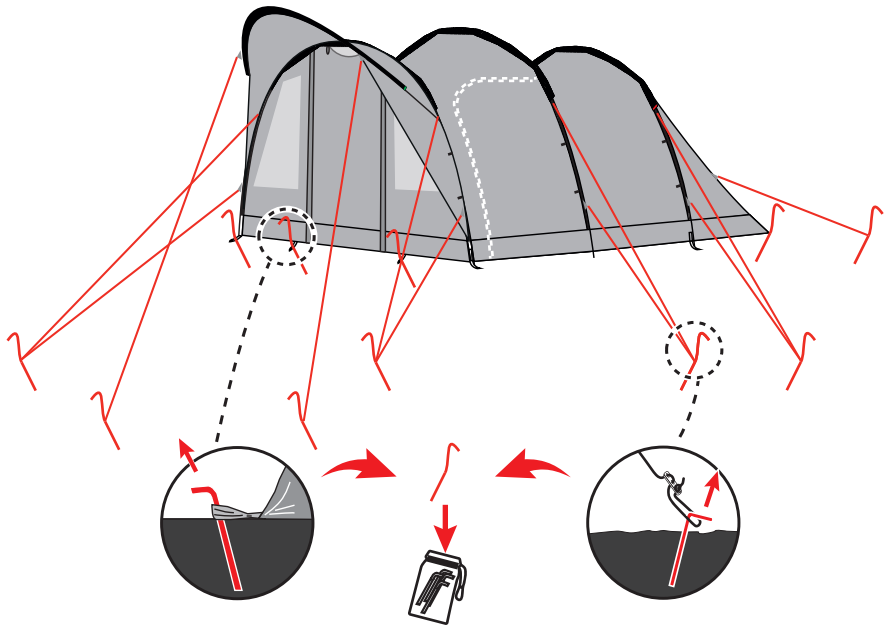
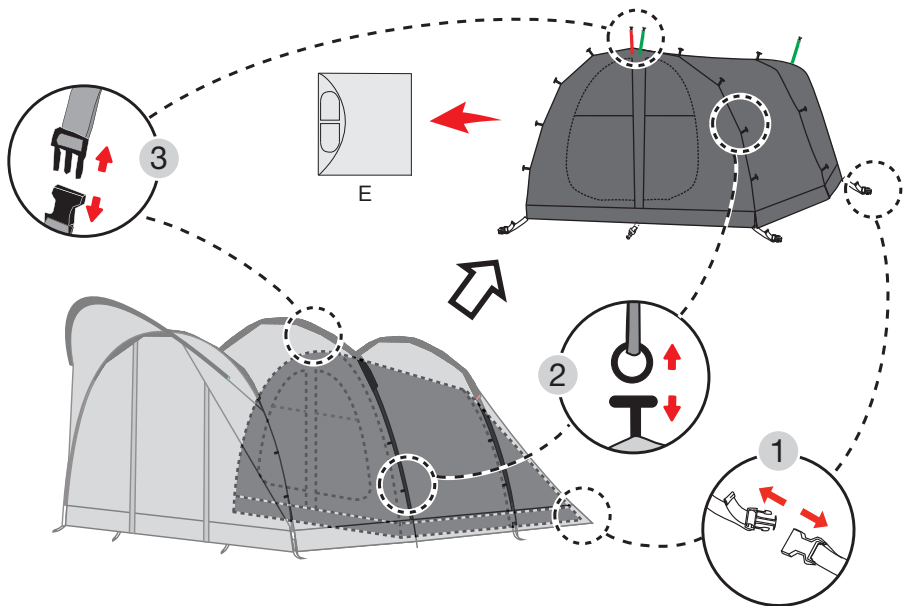


Diagram illustrating the final steps of setting up the tent, including securing the flysheet and attaching the stakes.

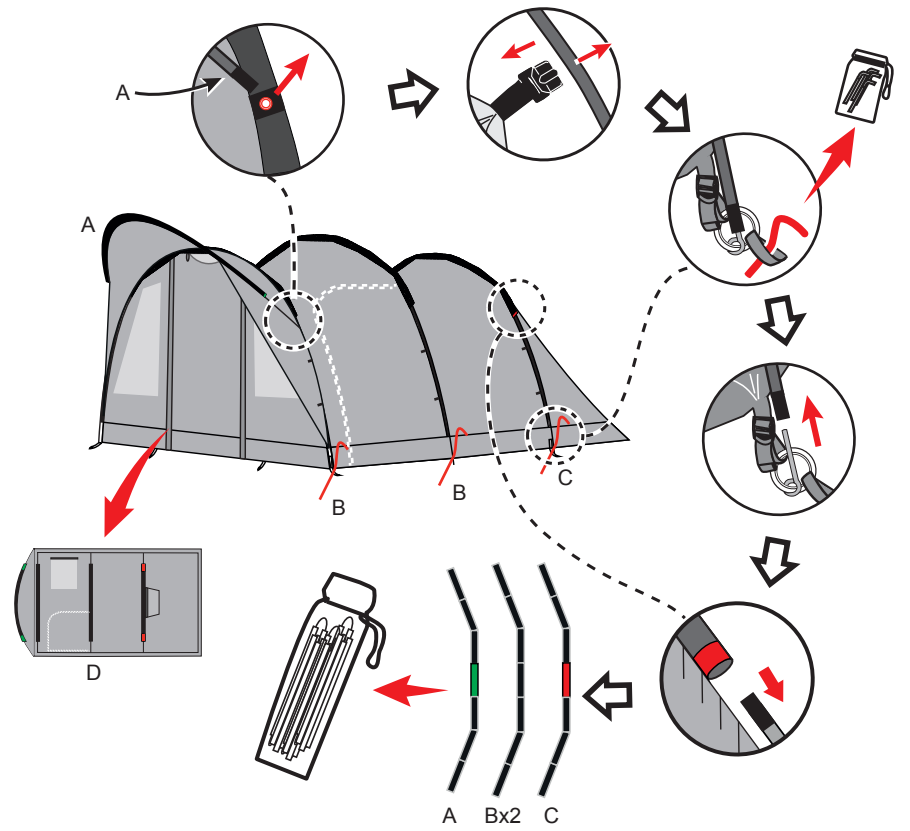
1 - SET DOWN



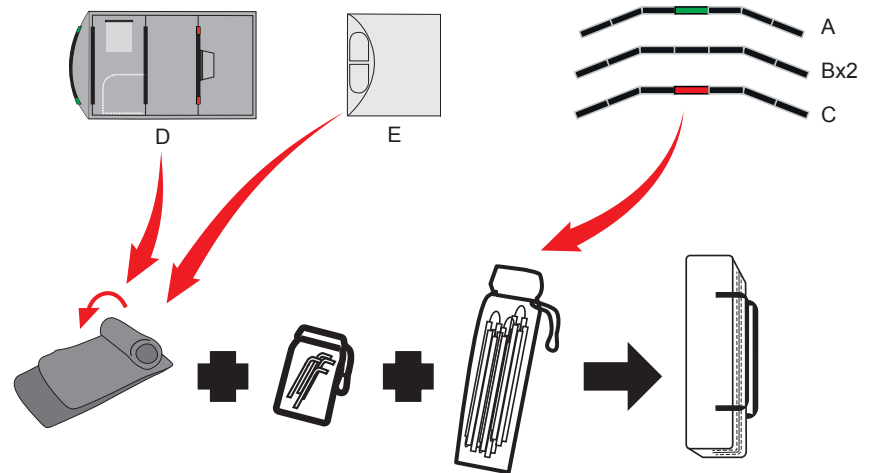
2 - SET DOWN



3 - SET DOWN



4 - SET DOWN



Stitch Line